

RETAIL SPACE FOR LEASE



1580 POST ROAD FAIRFIELD, CONNECTICUT

- SIZE:** 7,800 ± SQUARE FEET
- TERM:** NEGOTIABLE
- RATE:** \$15.00 PSF, PLUS REAL ESTATE TAXES
- COMMENTS:**
- CONVENIENTLY LOCATED OFF I-95 AT EXIT #21.
 - BUSY DOWNTOWN FAIRFIELD LOCATION.
 - ON-SITE PARKING.
 - STREET PYLON SIGNAGE AVAILABLE.

FOR FURTHER INFORMATION, CONTACT EXCLUSIVE AGENT:

LESTER H. FRADKOFF
SENIOR VICE PRESIDENT
OFFICE: 203-254-6595
MOBILE: 203-218-4940
E-MAIL: LFRADKOFF@PRUCOM.COM



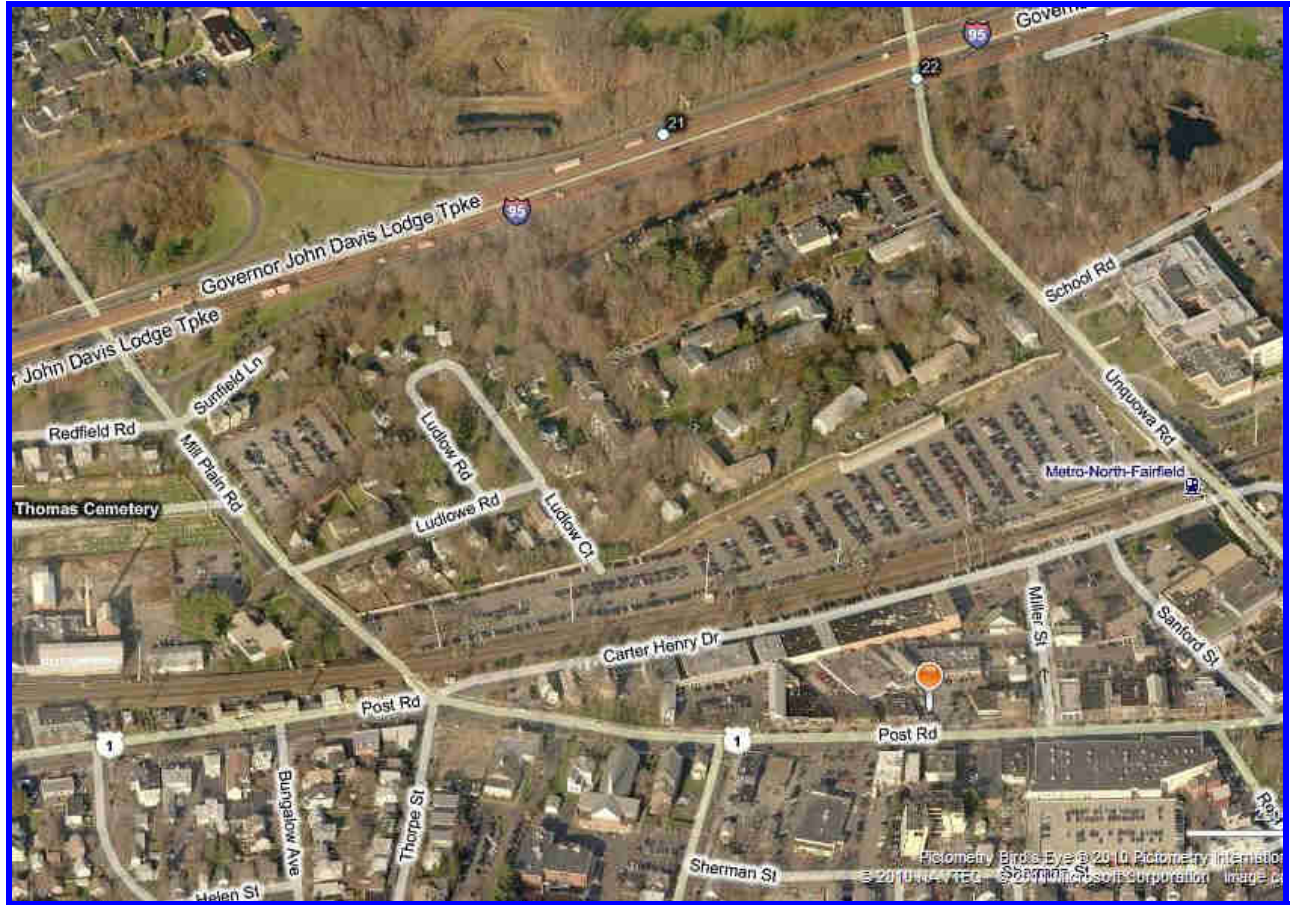
Prudential

COMMERCIAL REAL ESTATE

3530 POST ROAD
WWW.PRUCOM.COM

SOUTHPORT, CONNECTICUT 06890

AERIAL MAP



STREET MAP

